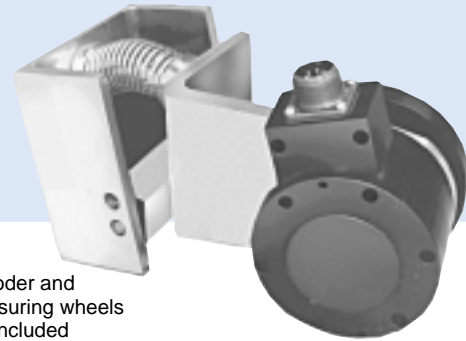


Pivot Mounting Bracket

- Complete pre-assembled mounting system with hardware included
- Single or dual wheel uses same mount
- Easy machine attachment
- Built-in spring tension for accurate tracking



Encoder and measuring wheels not included

APPLICATION/INDUSTRY

Provides adjustable, vertical, spring loading for the listed "Compatible Encoders" equipped with measuring wheels.

DESCRIPTION

Rugged and stable, the bracket is precision machined from heavy gauge aluminum. Encoder is mounted using holes which are positioned to accommodate the listed "Compatible Encoders". Dual shaft encoders may accommodate two wheels. Clearance holes are provided for base mounting to a suitable surface, or it may be mounted to 2" diameter tubing through use of "U" clamps.

SPECIFICATIONS

COMPATIBLE ENCODERS

The mounting bracket may be used with the listed series encoders having the specified mounting configurations.

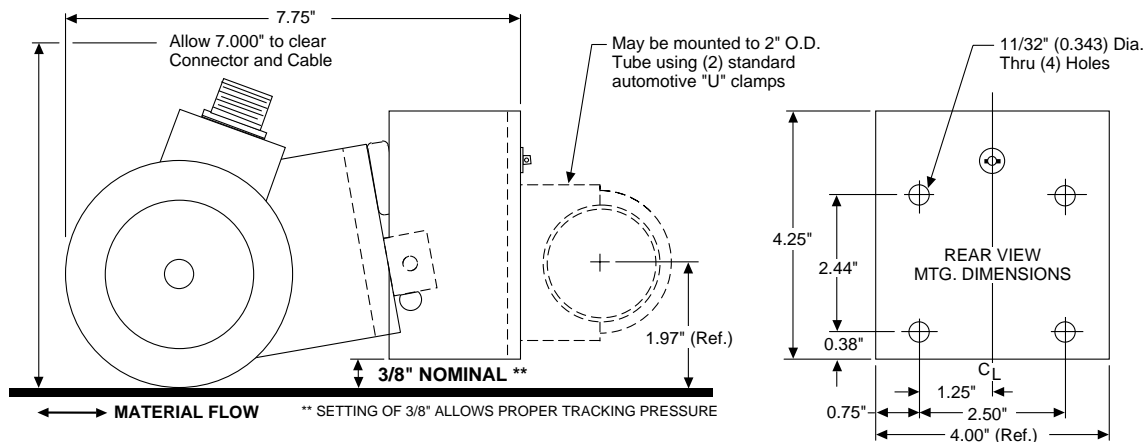
Encoder Series	Mounting Configuration	Figure
60A	All	2
60C	All	1
H42	2.5" Flange	3
H25	2.5" Flange	3
H25	2.5" Servo	4
HA725	2.5" Flange	3

Ordering Information

Model No.	Description
14005740000	Pivot Mounting Base

ACCESSORIES

Dimensions



INSTALLATION

Figure 1

60C SERIES (DUAL WHEEL)
(Face Mount)

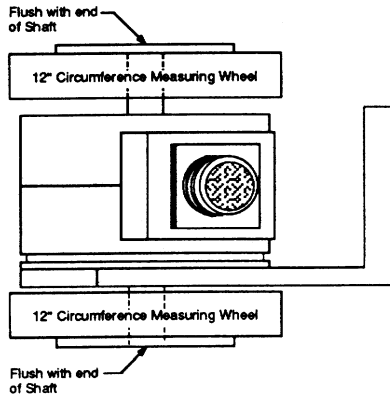


Figure 2

60A SERIES (SINGLE WHEEL)
(Face Mount)

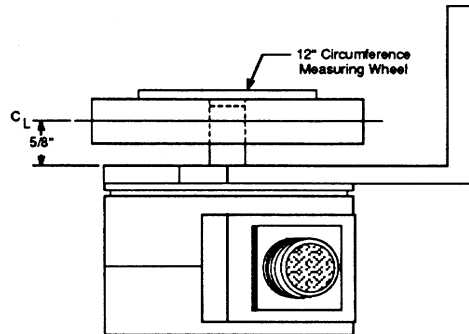
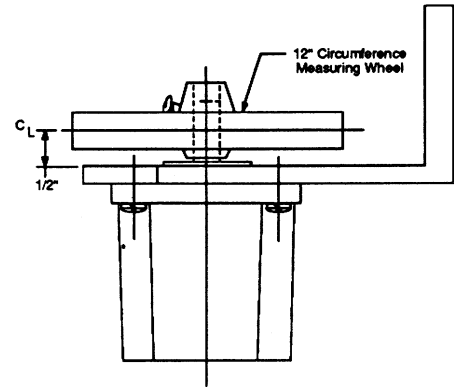


Figure 3

2.5" & 42 SERIES
(Flange Mount)



Procedure

**60C Series (Dual Wheel)
Face Mount Installation**

- 1) Mount encoder pilot in recess of "L" bracket.
- 2) Align (3) holes in face of encoder with counter-bored holes in bracket. Secure with #5-40 x 3/8" pan head machine screws with #6 split lock washers (included).
- 3) Install measuring wheels with hub side flush with shaft end and set screw over flat on shaft. Tighten set screws.

Procedure

**60A Series (single Wheel)
Face Mount Installation**

- 1) Mount encoder pilot in recess of "L" bracket.
- 2) Align (3) holes in face of encoder with counter-bored holes in bracket. Secure with #5-40 x 3/8" pan head machine screws with #6 split lock washers (included).
- 3) Install measuring wheel with hub side out and position center line at dimension shown above. Tighten set screws.

Procedure

**H25 & H42 Series (single Wheel)
Flange Mount
Installation**

- 1) Mount encoder pilot in hole of "L" bracket.
- 2) Align (4) holes in face of encoder with counter-bored holes in bracket. Secure with #10-32 x 1/2" pan head machine screws with #10 split lock washers (included).
- 3) Install measuring wheel with hub side out and position center line at dimension shown above. Tighten set screws.