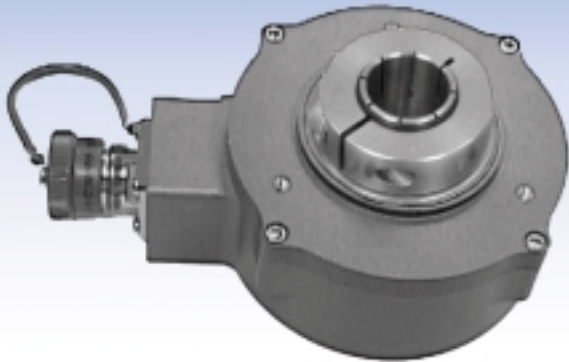


NEW



Series HSD37

- *Single or Dual Output*
- *Double-Sealed Housing*
- *ATEX Certification for Intrinsically Safe Applications*
- *High Resolution Unbreakable Disk*
- *Electrically and Thermally Isolated*
- *Industrial Duty Connector*
- *NEMA 4X, 6 / IP66, 67 Rated*
- *Rugged Cast-Aluminum Housing*
- *Nickel or Stainless Steel Housing Available*
- *Two Year Warranty*

Extreme Heavy Duty Hollowshaft Encoder

DESCRIPTION

NorthStar's HSD37 Extreme Duty Industrial Hollowshaft Encoder accepts up to 1" diameter shafts and operates reliably from -40 to +100°C. Its Hard Anodized finish enclosure exceeds IP66/IP67 and NEMA 6 enclosure requirements.

This robust encoder features a double-sealed housing that allows application where regulatory washdown or caustic chemicals are present. Utilization of an advanced Opto ASIC with innovative packaging techniques enables the encoder to operate in high shock and vibration environments.

It is also available in an Intrinsically Safe version, certified to ATEX EEx ia IIB T4, when used with the appropriate IS Barrier.

APPLICATIONS:

The HSD37 extreme duty encoder features simple installation on motor or machine shafts. It is often mounted on the back of motors where encoder feedback is needed in harsh environment applications. It is ideal for use in environments that demand heavy washdown protection.

- *Converting Machinery*
- *Material Handling*
- *Packaging Equipment*
- *Processing Equipment*

INDUSTRIES

Chemical, Food & Beverage, Oil & Gas, Paper, Steel and any other where a precise encoder is needed to operate in harsh environments.

FEATURES/BENEFITS

Mechanical and Environmental

- *Unbreakable code disk*
- *Hollowshaft mounting*
- *Heavy duty shaft seals*
- *Sealed connector*

Electrical

- *Cast housing maximizes noise immunity and durability*
- *ATEX certification available*



Extreme Heavy Duty Hollowshaft Encoder

Series HSD37

Extreme Heavy Duty... Meets Stringent Washdown Requirements

SPECIFICATIONS*

STANDARD OPERATING CHARACTERISTICS

Code: Incremental
Resolution: to 5000 PPR (pulses/revolution) See Ordering Information
Format: Two channel quadrature (AB) with optional Index (Z), and complementary outputs
Phase Sense: A leads B for CCW shaft rotation viewing the shaft clamp end of the encoder
Quadrature Phasing: 90° ± 15° electrical
Symmetry: 180° ± 18° electrical
Waveforms: Squarewave with rise and fall times less than 1 microsecond into a load capacitance of 1000 pf

ELECTRICAL

Input Power: 5-26VDC, 50 mA max., not including output loads. ATEX: 5VDC, 5-26VDC
Outputs: ET7272, ET7273
Frequency Response: 125 kHz (data & index)
Termination: MS Connector; M12 Connector; cable exit w/seal. See Ordering Information
Mating Connector:
 6 pin MS, style MS3106A-14S-6S (MCN-N4);
 7 pin MS, style MS3106A-16S-1S (MCN-N5);
 10 pin MS, style MS3106A-18-1S (MCN-N6);
 Cable w/ 5 pin M12 connector, p/n 112859-xxx
 Cable w/ 8 pin M12 connector, p/n 112860-xxx

MECHANICAL

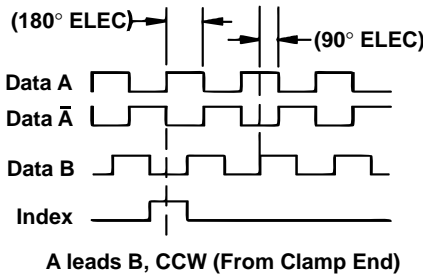
Shaft Material: 6061-T6 Aluminum
Bore Diameter: 1.00", 0.875, 0.750", 0.625", 0.500", 16mm, 15mm, 12mm. Insulated inserts provided for bores under 1 inch (1" bore not electrically isolated)
Bore runout: ±0.0005 TIR at midpoint
Min. Shaft Engagement: 1.25"
Starting torque: 4.5 in-oz. maximum (at 25°C)
Running torque: 4.0 in-oz. maximum (at ambient)
Bearings: 61806-ZZ
Bearing life: 5 x 10⁸ revs at rated shaft Loading, 5 x 10¹¹ revs at 10% of rated shaft loading. (manufacturers' specs)
Housing and cover: Hard Anodized Aluminum. Also available in Electroless Nickel finish and Stainless Steel.
Disc material: Metal or mylar (unbreakable)
Weight: 35 ounces, typical

* Specifications are for base models with standard features only unless otherwise noted. Specifications subject to change without notice in accordance with our DBS policy of continuous improvement. All product and brand names are trademarks of their respective owners. All rights reserved.

NorthStar™ brand is a trademark of Danaher Industrial Controls Group. All rights reserved. © 2006 DICG Corp.

NorthStar Brand HSD37 Data Sheet (8/06)

DATA AND INDEX Not all complements shown A shown for reference



ENVIRONMENTAL

Operating Temperature: -40 to 100°C
Operating Temperature ATEX: -40 to 80°C
Storage temperature: -40 to 100°C
Shock: 50G's for 11msec duration
Vibration: 5 to 2000Hz @ 20 G's
Humidity: 100%
Enclosure Rating: NEMA 4X, NEMA 6, IP66, IP67 (NEMA 6P upon request)

ELECTRICAL CONNECTIONS

6, 7 & 10 Pin MS Connectors and Cables

Connector & mate/accessory cable assembly pin numbers and wire color information is provided here for reference. HSD37 models with direct cable exit carry the color coding as shown in the right hand column.

Encoder Function	Cable # 108594-6 Pin Single Ended		Cable # 108595-7 Pin Single Ended		Cable # 108596-7 Pin Dif Line Drv w/ ldx		Cable # 1400635-10 Pin Dif Line Drv w/ ldx		Cable Exit with Seal Wire Color
	Pin	Wire Color	Pin	Wire Color	Pin	Wire Color	Pin	Wire Color	
Sig. A	E	BRN	A	BRN	A	BRN	A	BRN	GREEN
Sig. B	D	ORN	B	ORG	B	ORG	B	ORG	BLUE
Sig. Z	C	YEL	C	YEL	—	—	C	YEL	ORANGE
Power +V	B	RED	D	RED	D	RED	D	RED	RED
Com	A	BLK	F	BLK	F	BLK	F	BLK	BLACK
Case	—	—	G	GRN	G	GRN	G	GRN	WHITE
N/C	F	—	E	—	—	—	E	—	—
SigA	—	—	—	—	C	BRN/WHT	H	BRN/WHT	VIOLET
SigB	—	—	—	—	E	ORG/WHT	I	ORG/WHT	BROWN
SigZ	—	—	—	—	—	—	J	YEL/WHT	YELLOW

5 & 8 Pin M12 Accessory Cables when Code 8= N to R

Connector pin numbers and cable assembly wire color information is provided here for reference.

Encoder Function	Cable # 112859-5 Pin Single Ended		Cable # 112860-8 Pin Single Ended		Cable # 112860-8 Pin Differential	
	Pin	Wire Color	Pin	Wire Color	Pin	Wire Color
Sig. A	4	BLK	1	BRN	1	BRN
Sig. B	2	WHT	4	ORG	4	ORG
*Sig. Z	5	GRY	6	YEL	6	YEL
Power +V	1	BRN	2	RED	2	RED
Com	3	BLU	7	BLK	7	BLK
Sig. A-bar	—	—	—	—	3	BRN/WHT
Sig. B-bar	—	—	—	—	5	ORG/WHT
*Sig. Z-bar	—	—	—	—	8	YEL/WHT

* Index not provided on all models. See ordering information
 Cable Configuration: PVC jacket, 105 °C rated, overall foil shield; 24 AWG conductors, minimum

Headquarters: 1675 Delany Road • Gurnee, IL 60031-1282 • USA
 Phone: +1 847.662.2666 • Fax: +1 847.662.6633

Satellite Locations:
 North America: North Carolina, South Carolina, Connecticut, Massachusetts, New York, Canada, British Virgin Islands • Europe: United Kingdom, Italy, France, Germany, Spain, Slovakia • Latin America: Brazil • Asia: China, Japan, Korea, Singapore

Customer Service:
 Tel.: +1.800.873.8731
 Fax: +1.847.662.4150
 northstar.custserv@dancon.com

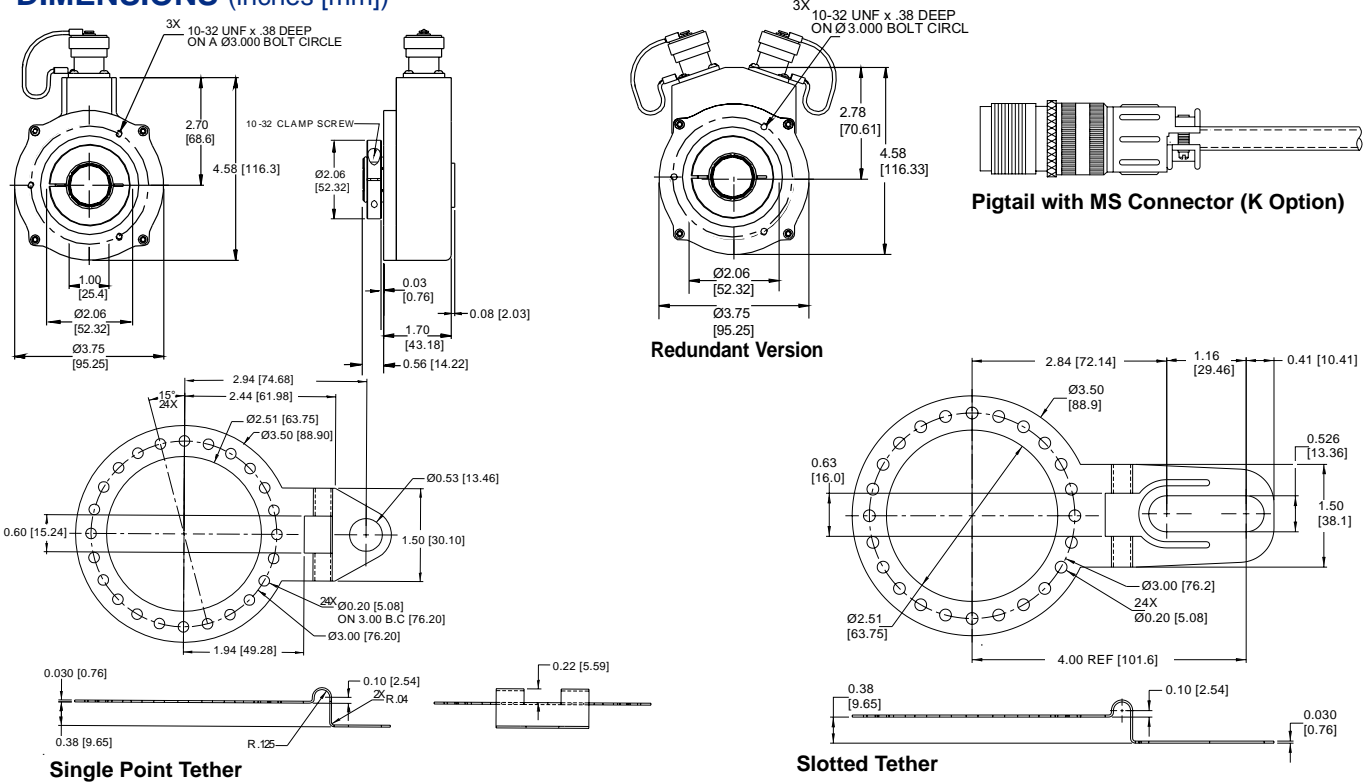
Technical Support
 Tel.: +1.800.234.8731
 Fax: +1.847.782.5277
 northstar.techsupport@dancon.com



www.feedbackdevices.com • www.danaherindustrialcontrols.com

Extreme Heavy Duty Encoder... Meets Stringent Washdown Requirements

DIMENSIONS (inches [mm])



ORDERING INFORMATION

Code 1: Model	Code 2: PPR	Code 3: Bore Size	Code 4: Format	Code 5: Output	Code 6: Termination	Code 7: Safety	Code 8: Housing/Tether
HSD37	<input type="checkbox"/>	<input type="checkbox"/>	<input type="checkbox"/>	<input type="checkbox"/>	<input type="checkbox"/>	<input type="checkbox"/>	<input type="checkbox"/>

Ordering Information							
HSD37 Size 37 extreme heavy-duty, hollowshaft encoder	0015	6 12mm	0 single ended, unidirectional (A)	0 5-26V in, 5-26V Open Collector out (7273)	0 6 pin connector	0 No ATEX	0 Cast Alum Housing; slotted tether
	0032	9 15 mm	1 single ended, bidirectional (AB)	2 5-26V in, 5-26V Push-Pull out	1 7 pin connector	1 ATEX Type 1* Option	1 Nickel Housing; slotted tether
	0100	7 1/2"	2 single ended, bidirectional with index (ABZ)	available when: Code 4 is 3 or 4	2 10 pin connector	available when: Code 5 is 0, 2, 3, F or G	2 Stainless Housing; slotted tether
	0200	8 5/8"	available when Code 5 is 3 or 4:	3 5-26V in, 5-26V Differential Line Driver out (7272)	5 6 pin connector, plus mating connector	2 ATEX Type 2* Option	3 Redundant Outputs (Dual Connector Housing); slotted tether
	0240	A 16mm	3 differential, bidirectional (AA BB)	4 5-26V in, 5V Differential Line Driver out (7272)	6 7 pin connector, plus mating connector	available when: Code 5 is 4	4 Nickel Housing; Redundant Outputs; slotted tether
	0250	C 3/4"	available when Code 5 is 3 or 4 and Code 6 is 2, 7, J, K, L, M, N or A		7 10 pin connector, plus mating connector	3 ATEX Type 3* Option	5 Stainless Housing, Redundant Outputs; slotted-tether
	0500	E 7/8"	4 differential, bidirectional-with index (AA BB ZZ)		A 18" (.5m) cable		6 Cast Alum Housing; single-point tether
	0512	not electrically isolated			J 8 pin M12 connector		D Nickel Housing; single-point tether
	0600	G 1"			K 18" (.5m) cable with 10 pin in-line connector		E Stainless Housing; single-point tether
	1000				L 36" (.91m) cable		F Redundant Outputs (Dual Connector Housing); single-point tether
	1024				M 60" (1.52m) cable		G Nickel Housing; Redundant Outputs ; single-point tether
	1200				N 120" (3.05m) cable		H Stainless Housing, Redundant Outputs; single-point tether
	2000				available when: Code 5 is 0 or 2		6 Same as "0" but no tether**
	2048				H 5 pin M12 connector		7 Same as "1" but no tether**
	2500						8 Same as "2" but no tether**
	4000						9 Same as "3" but no tether**
	5000						A Same as "4" but no tether**
							B Same as "5" but no tether**

Accessory Kits:
 113346-0001, Single Point Tether Kit, Includes Tether and attaching parts.
 113347-0001, Slotted Tether Kit, Includes Tether and attaching parts.

***Note: Available ATEX Certified Options**
 ATEX Type 1: ATEX Certified; 5V in, 5V out only
 ATEX Type 2: ATEX Certified; 5-26V in, 5-26V out
 ATEX Type 3: ATEX Certified; 5-26V in, 5V out

Worldwide Brands:

Dynapar™

Eagle Signal™

Harowe™

Hengstler™

NorthStar™

Veeder-Root™



**A division of
Danaher, a
Fortune 500
company with
offices in 30
countries around
the world.**

More Available. With factories around the world, global sales and applications support, and an expansive network of distributors, we stay close to our customers - shortening lead times and fostering responsiveness. Three-day lead time is standard, with same-day shipments available on many of our products.

More Selection. We have a broad selection of controllers to meet application requirements in a variety of industries. User-configurable, accurate and flexible, with low, mid, or high level performance ranges, our controller products meet your system and budgetary requirements.

More Reliable. Our experience with more than 25,000 customers has taught us to design controllers that are reliable and durable, with quality standards that meet six sigma requirements.

For additional information or a full-line catalog, contact DICG Customer Service or visit our web site.

* Specifications are for base models with standard features only unless otherwise noted. Specifications subject to change without notice in accordance with our DBS policy of continuous improvement. All product and brand names are trademarks of their respective owners. All rights reserved.

NorthStar™ brand is a trademark of Danaher Industrial Controls Group. All rights reserved.

© 2006 DICG Corp.

Headquarters: 1675 Delany Road • Gurnee, IL 60031-1282 • USA
Phone: +1 847.662.2666 • Fax: +1 847.662.6633

NorthStar brand HSD37 Data Sheet (0806)

Satellite Locations:
North America: North Carolina, South Carolina, Connecticut, Massachusetts, New York, Canada, British Virgin Islands • Europe: United Kingdom, Italy, France, Germany, Spain, Slovakia • Latin America: Brazil • Asia: China, Japan, Korea, Singapore

Customer Service:

Tel.: +1.800.873.8731

Fax: +1.847.662.4150

northstar.custserv@dancon.com

Technical Support

Tel.: +1.800.234.8731

Fax: +1.847.782.5277

northstar.techsupport@dancon.com



www.feedbackdevices.com • www.danaherindustrialcontrols.com

Factory Automation Worldwide Brands: *Dynapar™* • *Eagle Signal™* • *Harowe™* • *Hengstler™* • *NorthStar™* • *Veeder-Root™*