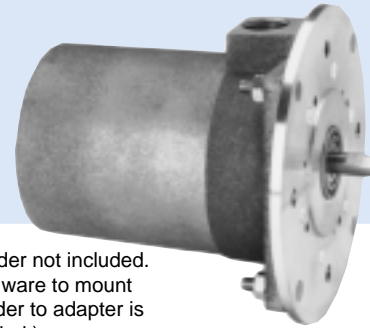


# 5PY Adapter for X25 Encoders

- Kits include mounting plate and hardware
- Makes servo X25 encoders interchangeable with 5PY DC tach generators.



Encoder not included. (Hardware to mount encoder to adapter is included.)

## APPLICATION/INDUSTRY

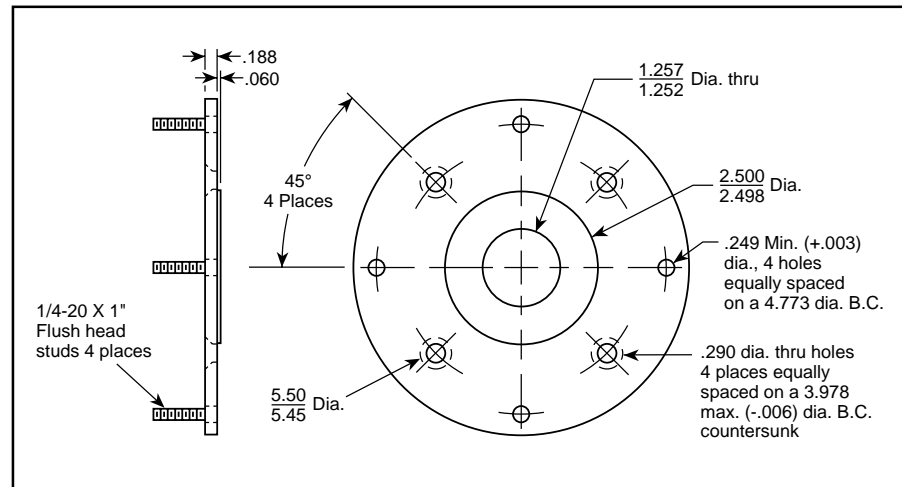
Makes X25 encoders interchangeable with 5PY DC tach generators.

## DESCRIPTION

Kits include mounting plate and hardware for mounting to flange or servo mount encoders, making them interchangeable with 5PY DC tach generators. (Shaft sizes may require different couplings.) Use with bidirectional encoder and FV2, Frequency/Voltage Converter to replace DC tach generators with brushless technology.

## SPECIFICATIONS

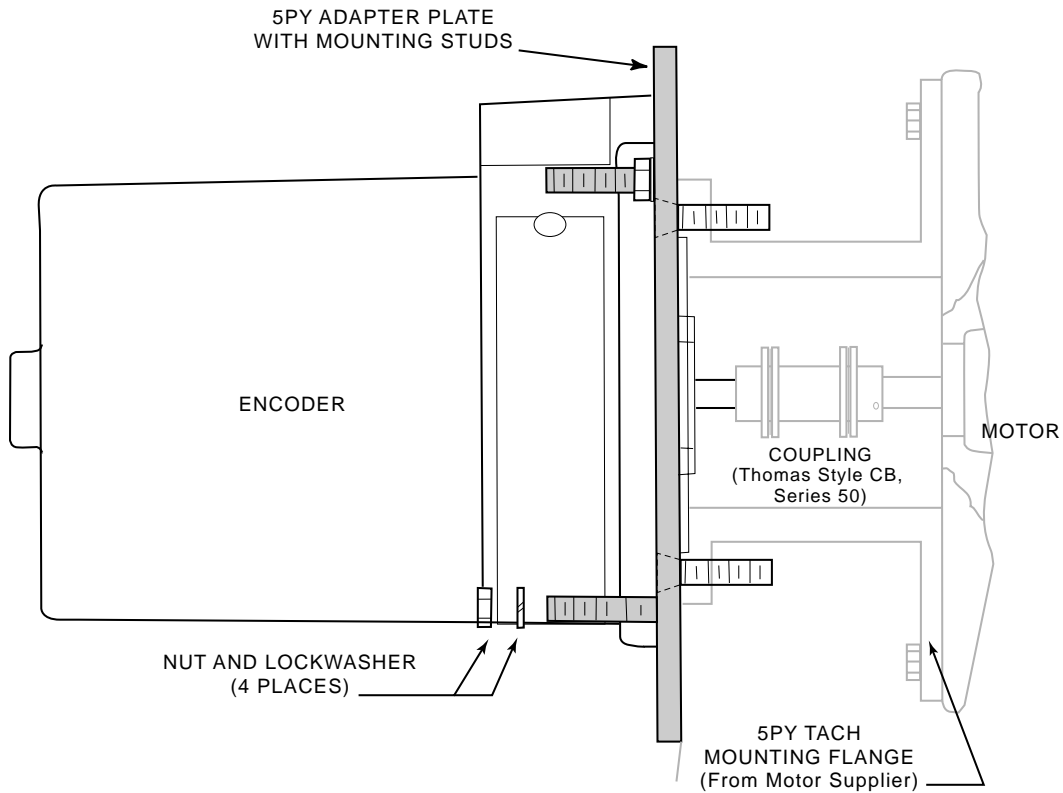
### DIMENSIONS



### Ordering Information

Model No.	Description
MPAEX5PY	5PY Adapter Kit for X25 encoder

**INSTALLATION**



**Procedure**

- 1) Loosen setscrews or clamps at coupling ends. Slide coupling onto motor shaft and tighten.
- 2) Install flat head bolts through adapter plate and into the motor housing adapter. Typically (4) #1/4-20 x 3/4" (provided). If housing is tapped, secure by tightening. If untapped, secure with nuts as required.
- 3) Assemble Adapter Plate to encoder housing by guiding studs on plate through holes in encoder flange and encoder shaft into coupling end. Secure to plate with 1/4" split lock washers and #1/4-20 nuts (provided).
- 4) Tighten encoder end of coupling.